



MODULE

iMotions Voice Analysis

Insights from vocal data

iMotions Voice Analysis

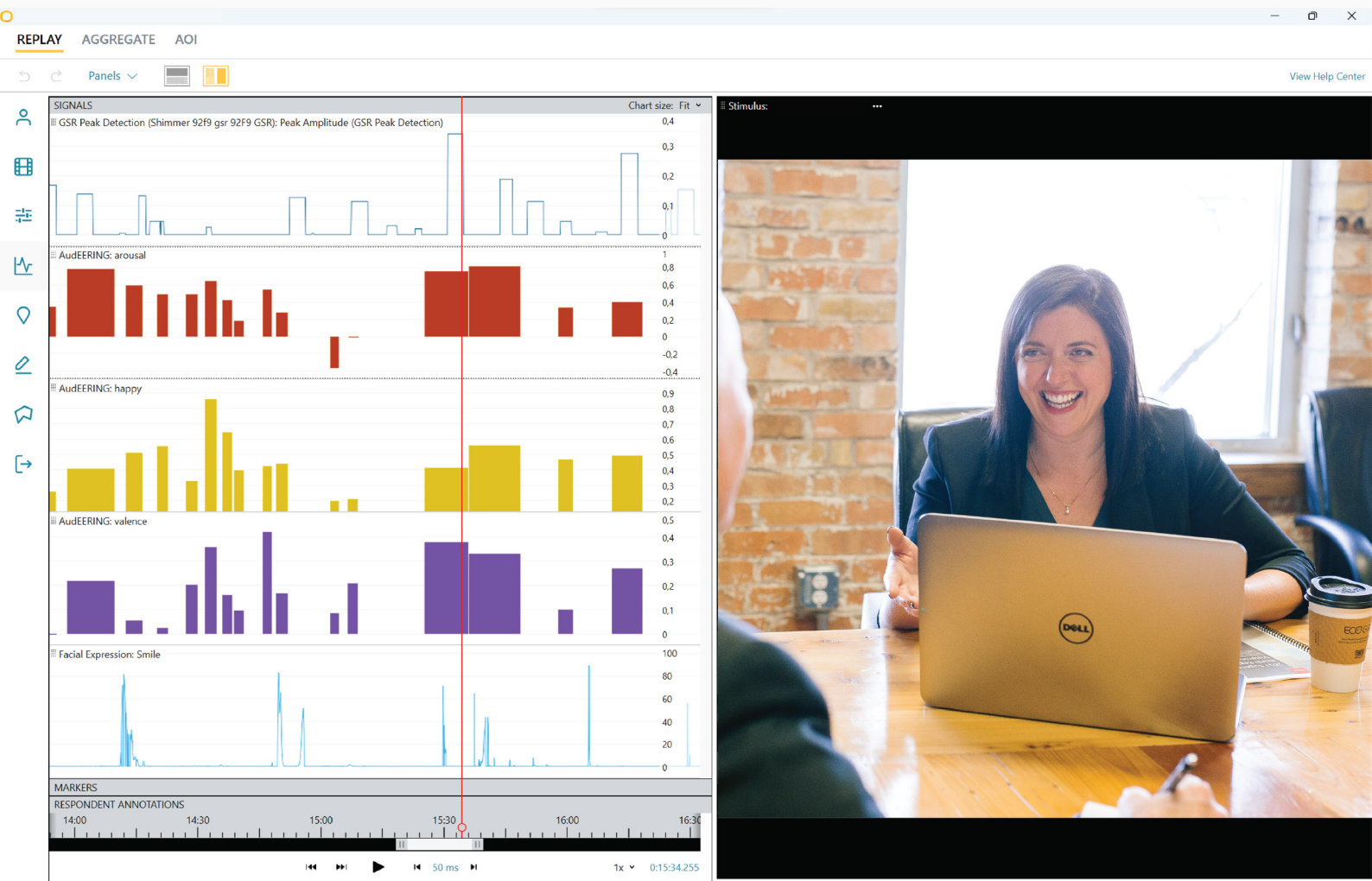
Confidential © 2023 Redistribution is not permitted without written permission from iMotions

Voice analysis

Discover new insights with vocal data

Voice analysis opens up an entirely new layer of human behavior data to be explored. While this technology has been firmly established in academic use, the application of the modality is only now beginning to emerge as a widely used practice. iMotions provides voice analysis through audEERING - a pioneering company producing the world's leading voice analysis technology.

- Non-invasive insights into people's mental and emotional states
- No new hardware required - reprocess old studies for new insights
- An established methodology with a perfect fit for novel applications
- Combine with speech-to-text analysis for complete coverage of vocal expressions
- All processing takes place offline and locally, helping ensure privacy and security

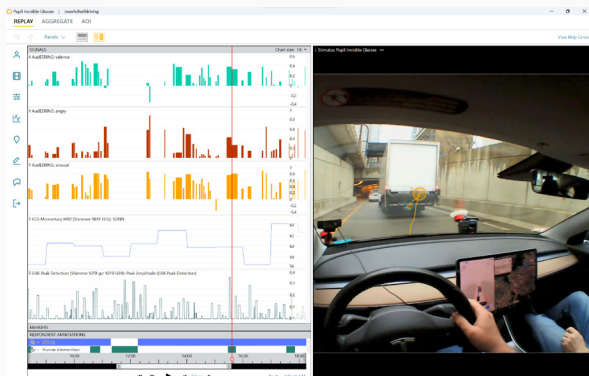


A new layer of human data

A deeper understanding

What can the voice tell us?

Voice analysis is the process by which vocal sounds are measured and associated with defined metrics – such as the emotion, prosody, or presence/absence of speech. Crucially, voice analysis doesn't provide any direct information about any words used, but rather the way in which they were produced. Over the last century, researchers have found that our voice can tell us a lot about ourselves, including our emotional states and which diseases we may be experiencing. Voice analysis is particularly powerful due to its versatility, non-invasiveness and accessibility..



Explore every part of the voice

The voice analysis module allows for analysis at every level of vocal production. Go deep into emotion analysis and collect data related to emotion detection (angry, happy, sad, neutral), and emotional valence (arousal, dominance, and valence). Explore fundamental voice features with metrics relating to prosody, including pitch, loudness, speaking rate, and intonation. Get data regarding perceived gender and age. Add in speech-to-text analysis from AssemblyAI to assess the semantic value of words alongside the valence related to their production. Use this data to build a thorough understanding of the otherwise hidden features within spoken words.

The leading company within voice analysis

iMotions has partnered with audeERING - the world's leading voice analysis company. audeERING's roots trace back to the AI research group by Prof. Björn Schuller, creator of openSMILE. Together with Dagmar Schuller, Dr. Florian Eyben, Dr. Felix Weninger and Dr. Martin Wöllmer, they founded audeERING in 2012. audeERING develops applications for voice analysis, emotion detection, voice biomarkers for detecting diseases, and much more.

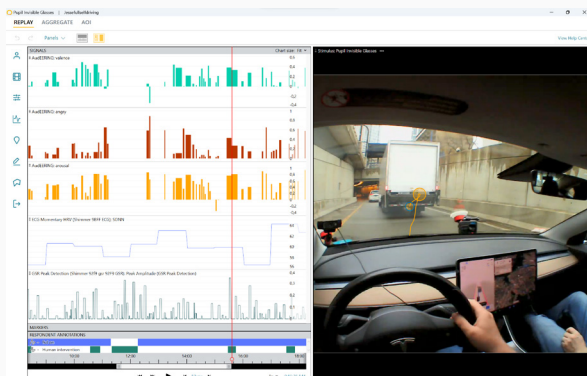


Hidden in sound

Reveal otherwise hidden data

An established and growing methodology

Voice analysis research has been taking place for over 100 years, and is well-established within the fields of healthcare, human factors, linguistics, and psychology, where it is used to diagnose, characterize, and provide deep information about speech production and meaning. Voice analysis is also increasingly applied within UX studies during think aloud protocols, and for providing another layer of data within consumer neuroscience and neuromarketing protocols.

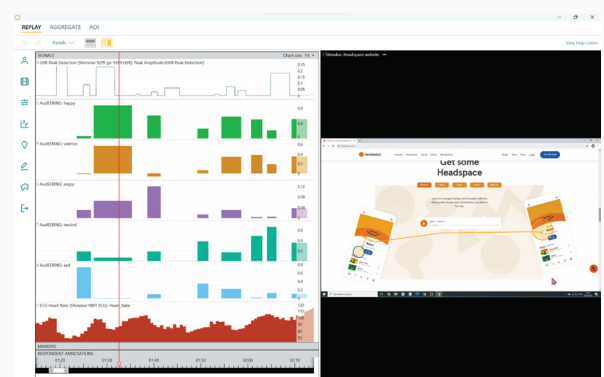


Old data, new insights

Analyze any data where voices are present. The voice analysis module allows you to collect and investigate new sources of data, and to reprocess pre-existing data. No specialized hardware required - audio recordings containing voice are all that are needed. Gather new insights with just the click of a button.

Easily integrated with other biosensors

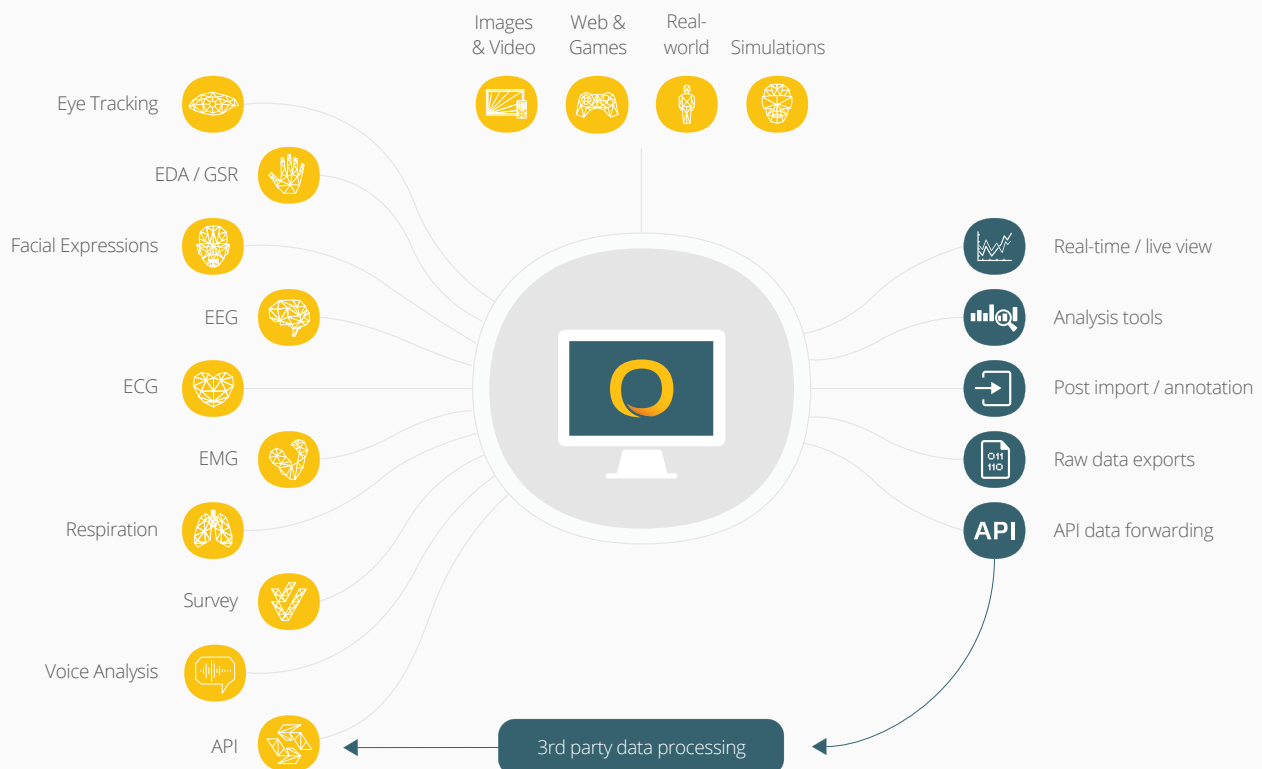
Integrate and synchronize 50+ different sensors from 20+ independent vendors, across 10+ modalities. Add even more sensors through the Lab Streaming Layer. Forward data in real time and import external sensor / software data and loop it back into the platform via the API.



iMotions Lab

Multimodal research in any environment

iMotions reduces the complexity of carrying out multimodal research, enabling a wide array of sensors to be seamlessly connected. By combining these different physiological measurements, it's possible to get a better understanding of human behavior in any environment.



Used by	Used for	Used in	Users report
70+	2250+	70+	97.6%
of the world's top ranked universities	studies every month on average	countries worldwide	support satisfaction rate

The iMotions software is a modular system, with a central hub upon which a variety of biosensors and their corresponding modules can be integrated. This multimodal approach is designed to streamline human behavior studies, from study design and stimuli presentation to data collection and analysis, all in one unified software suite to advance human behavior research.



Want to know more?

GET IN TOUCH



Copenhagen, Denmark

Kristen Bernikows Gade 6
4th floor
København K, 1105
TEL +45 71 998 098

Boston, USA

38 Chauncy Street
Floor 8, Suite 800
Boston, MA 02111
TEL +1 617-520-4958

Synchronize, Visualize and Analyze your research in Eye Tracking, Facial Expression Analysis, Galvanic Skin Response, Surveys, EEG and much more in one software platform.

www.imotions.com

China

NO.1 Fortune Avenue,
Room 2902
Yubei District, Chongqing
TEL +886 931684806